

Western-style comfort. A large double-sided fireplace separates the dining space from the living room. The large L-shaped sofa has a solid teak platform and deep futons filled with natural cotton and covered with soft, washed, natural linen. There is also a solid carved wood chair by Swiss artist Nathaniel Gluska. A long, wood, low console table with custom-made storage baskets and wood boxes is situated behind the sofa. This same console design becomes a serving credenza in the dining room.

From the open kitchen, double sliding doors open to the outdoor living room, an elevated deck space overlooking the garden and pool areas. Seating on this deck/living space is provided by a series of cedar platforms that are on casters and can be arranged in several different configurations. Outdoor cushions and pillows are arranged on the platforms while other platforms are left bare and are used as dining and working surfaces. The master bedroom suite is on the top floor, up the open stairs from the internal living room. The bed floats on a natural, solid teak platform facing the bay. On either side of the bed are custom-designed bedside tables. A fireplace on one side creates a small space for quiet reading while an external balcony allows commanding views over the entire bay.

RIGHT: View of living area with extensive water views

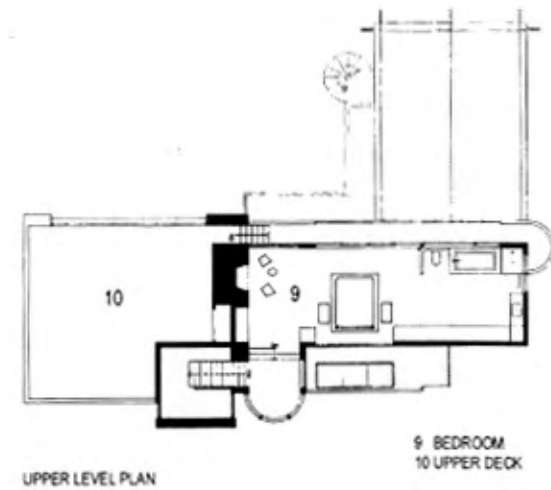
First Floor Plan



Second Floor Plan



Third Floor Plan





**LEFT AND ABOVE:** Dining area  
with custom furniture by  
Bonetti/Kozenski Studio  
**FOLLOWING PAGES:** Master  
bedroom

